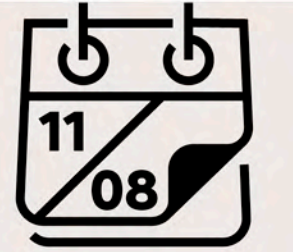


Jeux olympiques

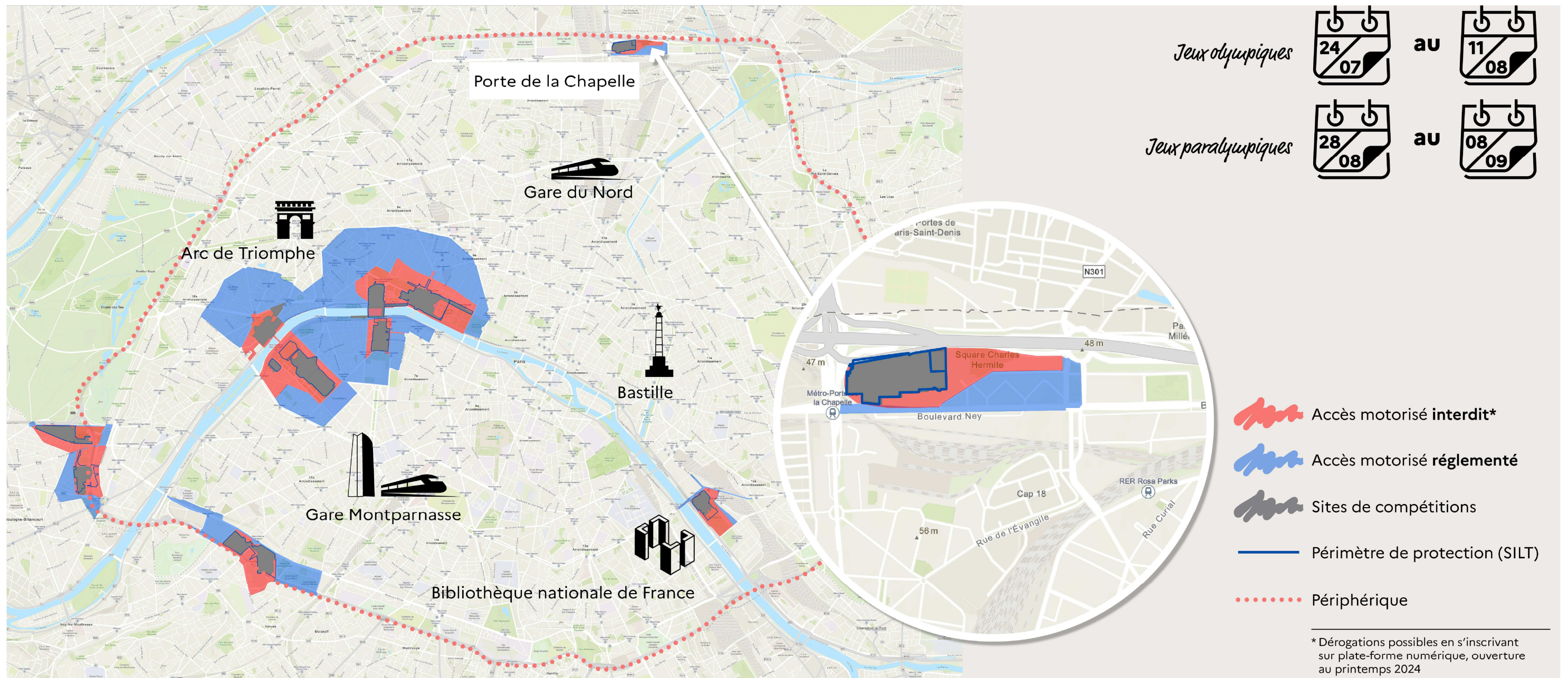


au

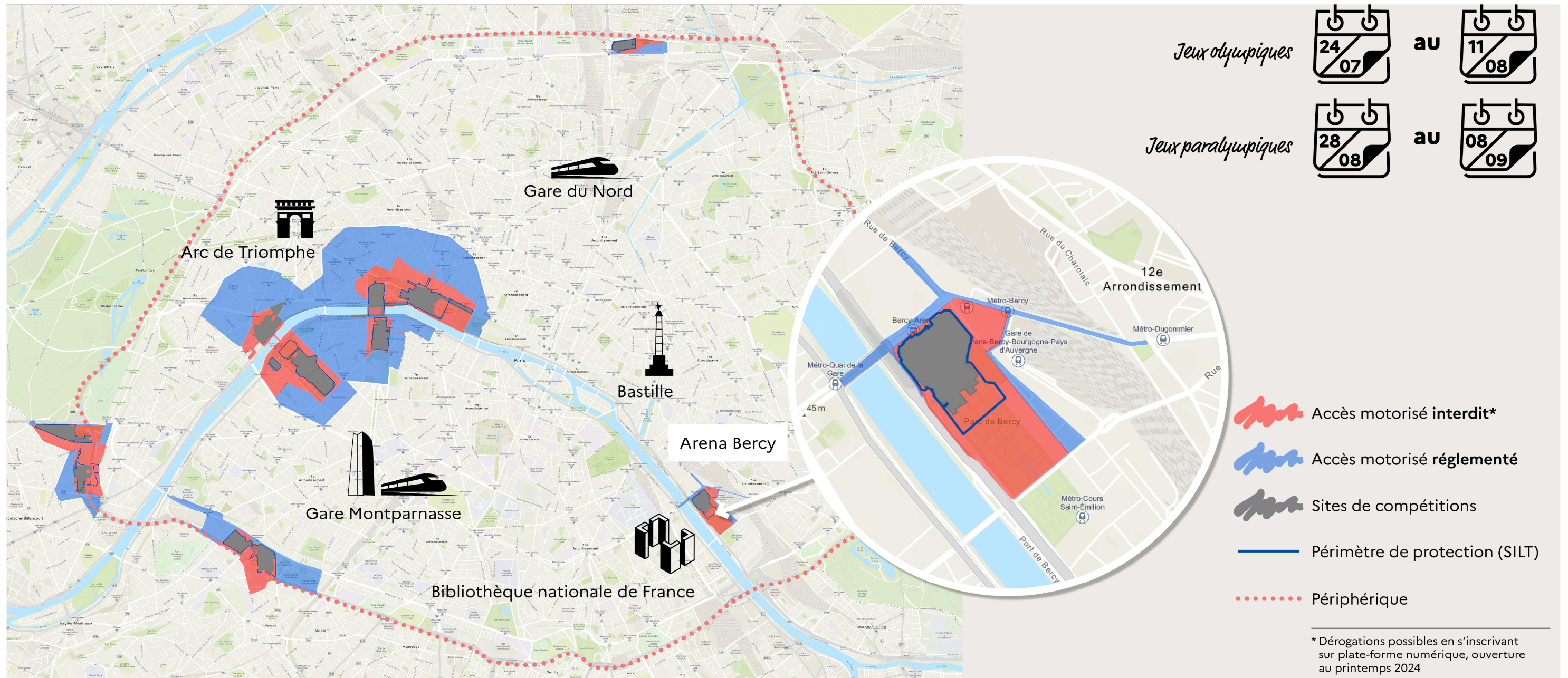


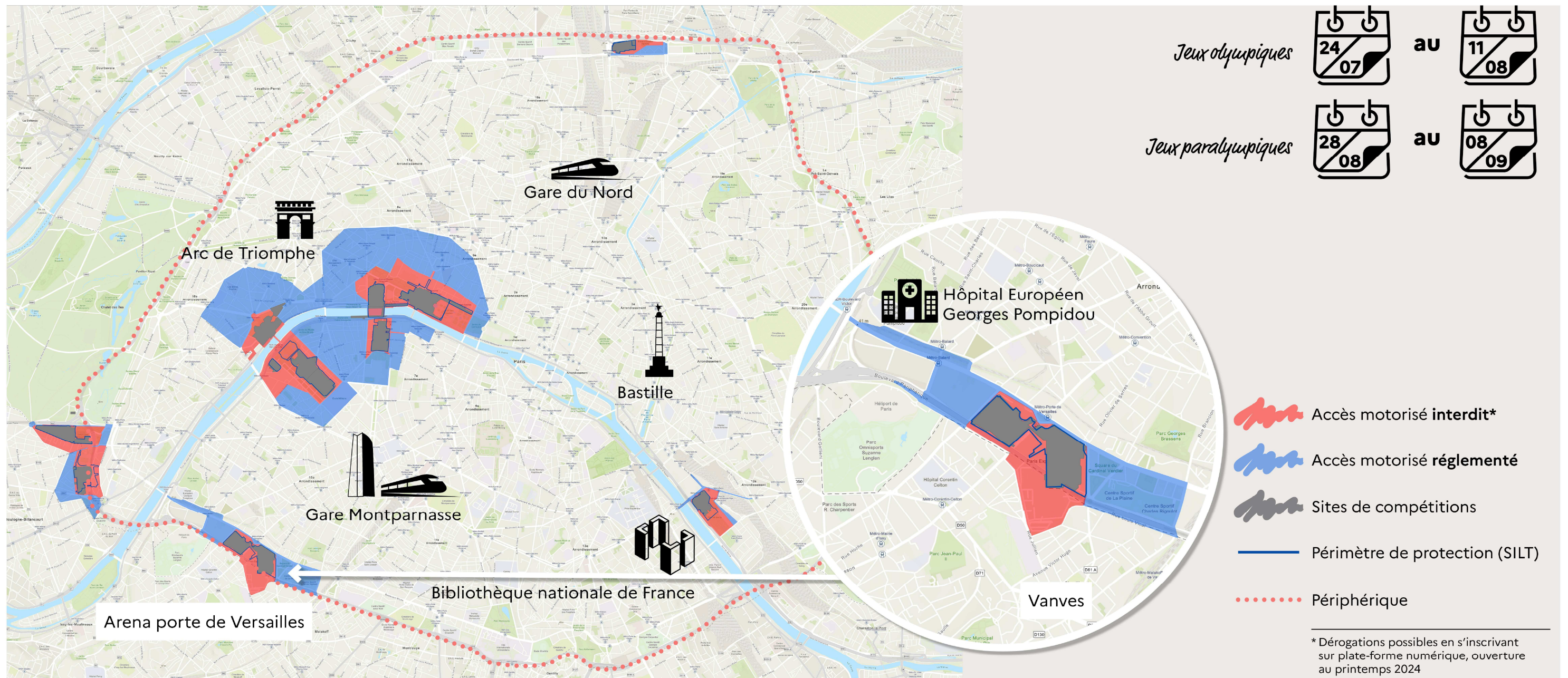
-  Accès motorisé **interdit***
-  Accès motorisé **réglementé**
-  Sites de compétitions
-  Périmètre de protection (SILT)
-  Périphérique

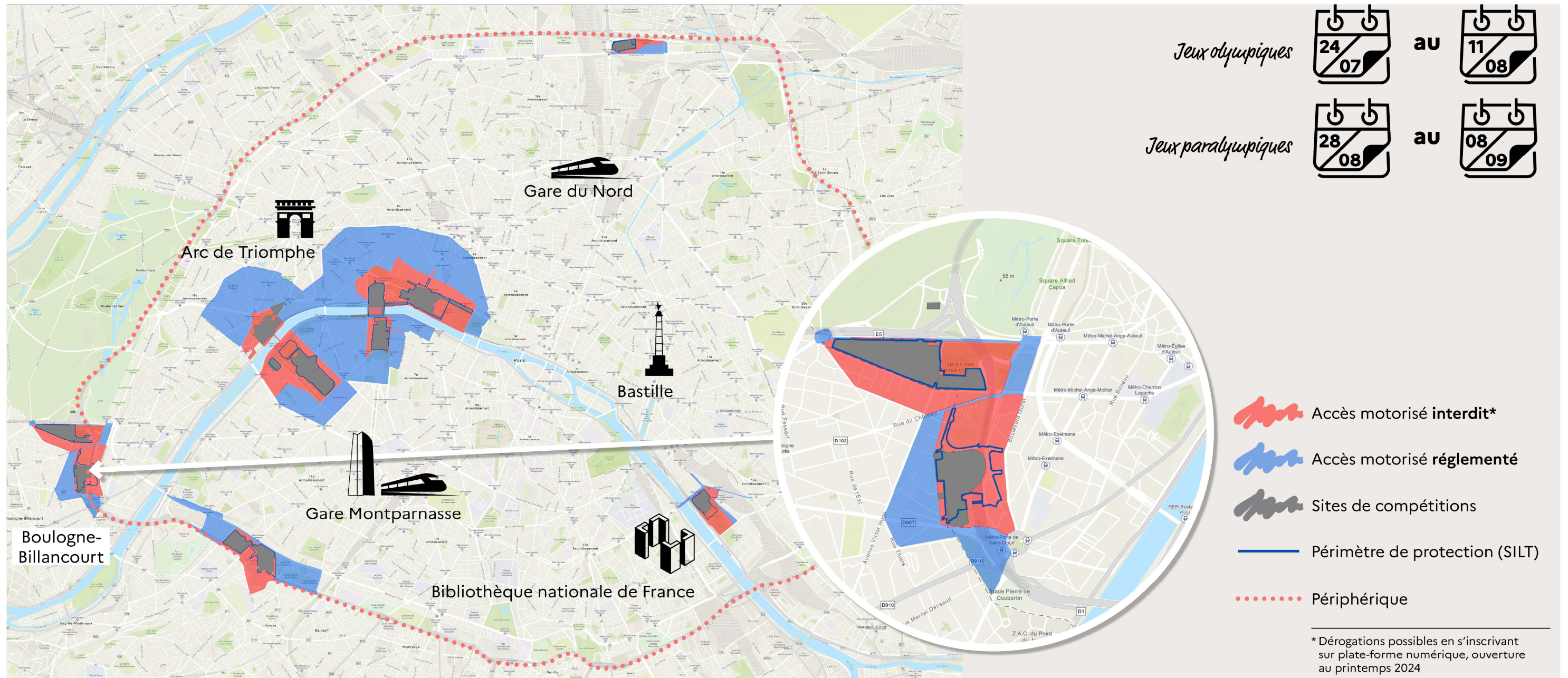
* Dérogations possibles en s'inscrivant sur plate-forme numérique, ouverture au printemps 2024

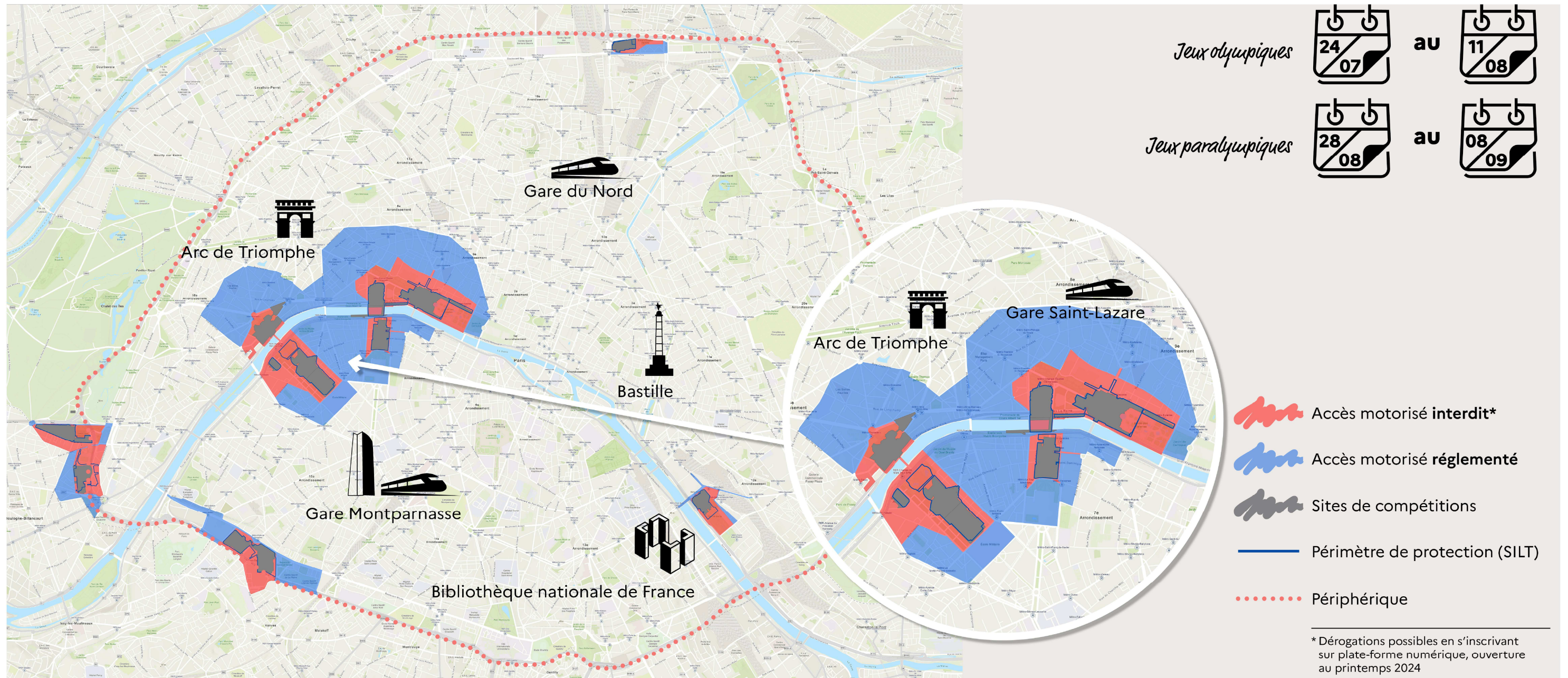


Sites olympiques et paralympiques | Vue Paris | Arena la Chapelle



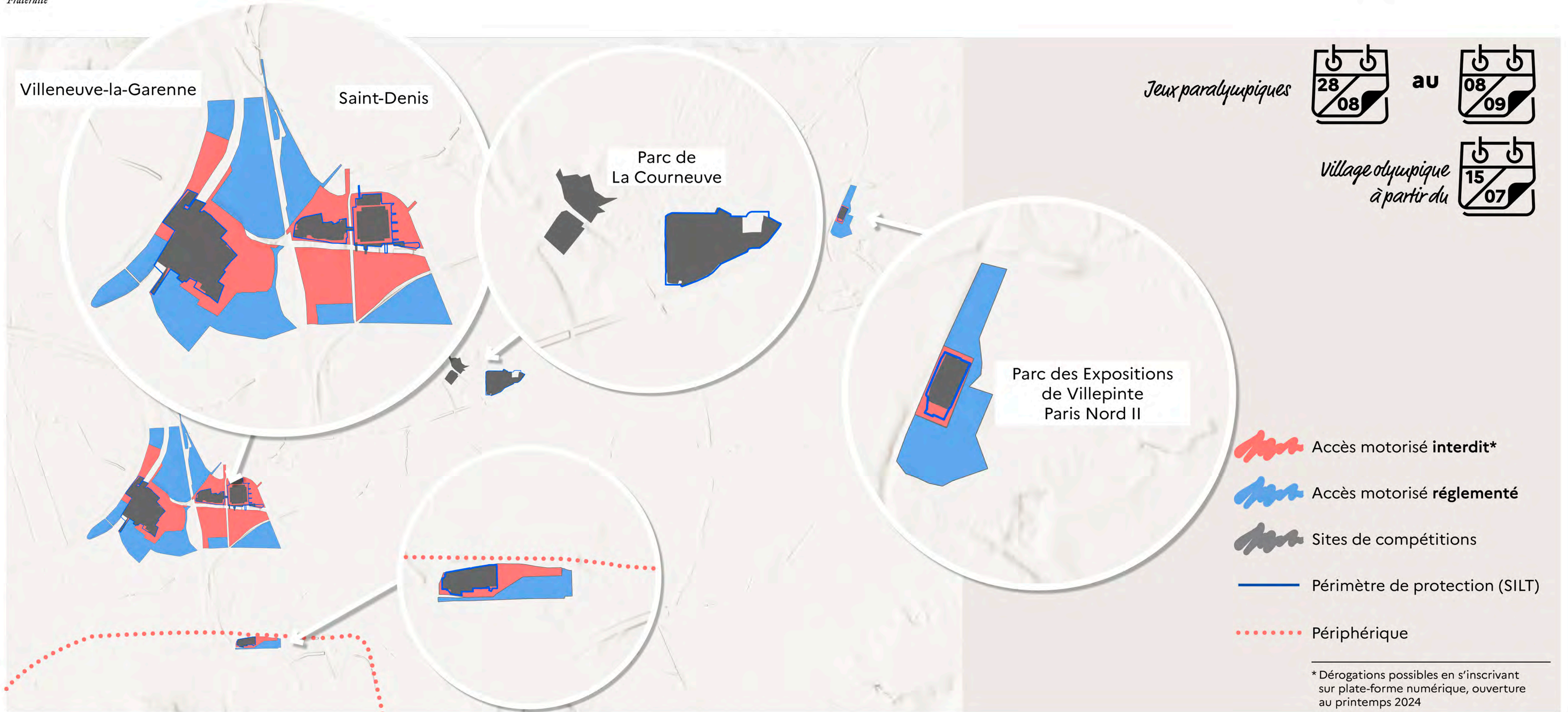


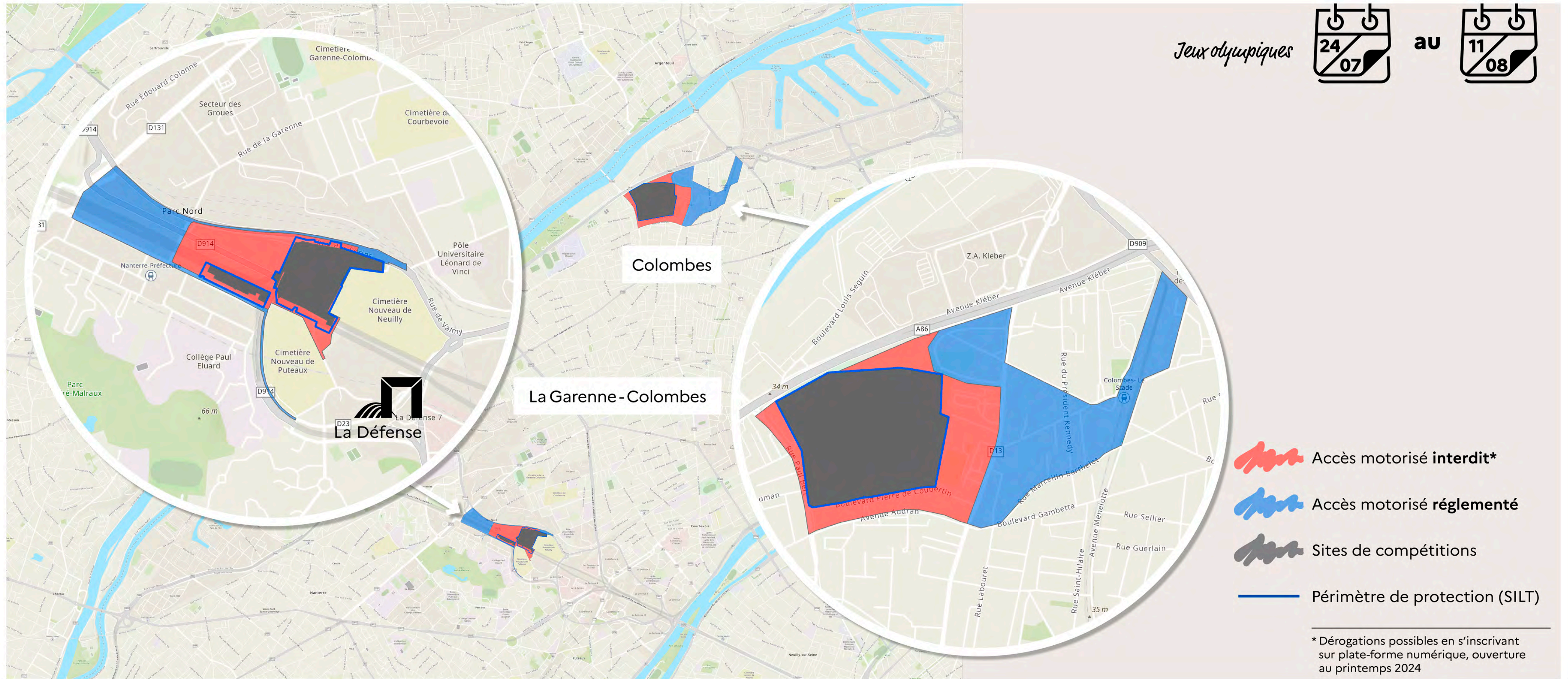


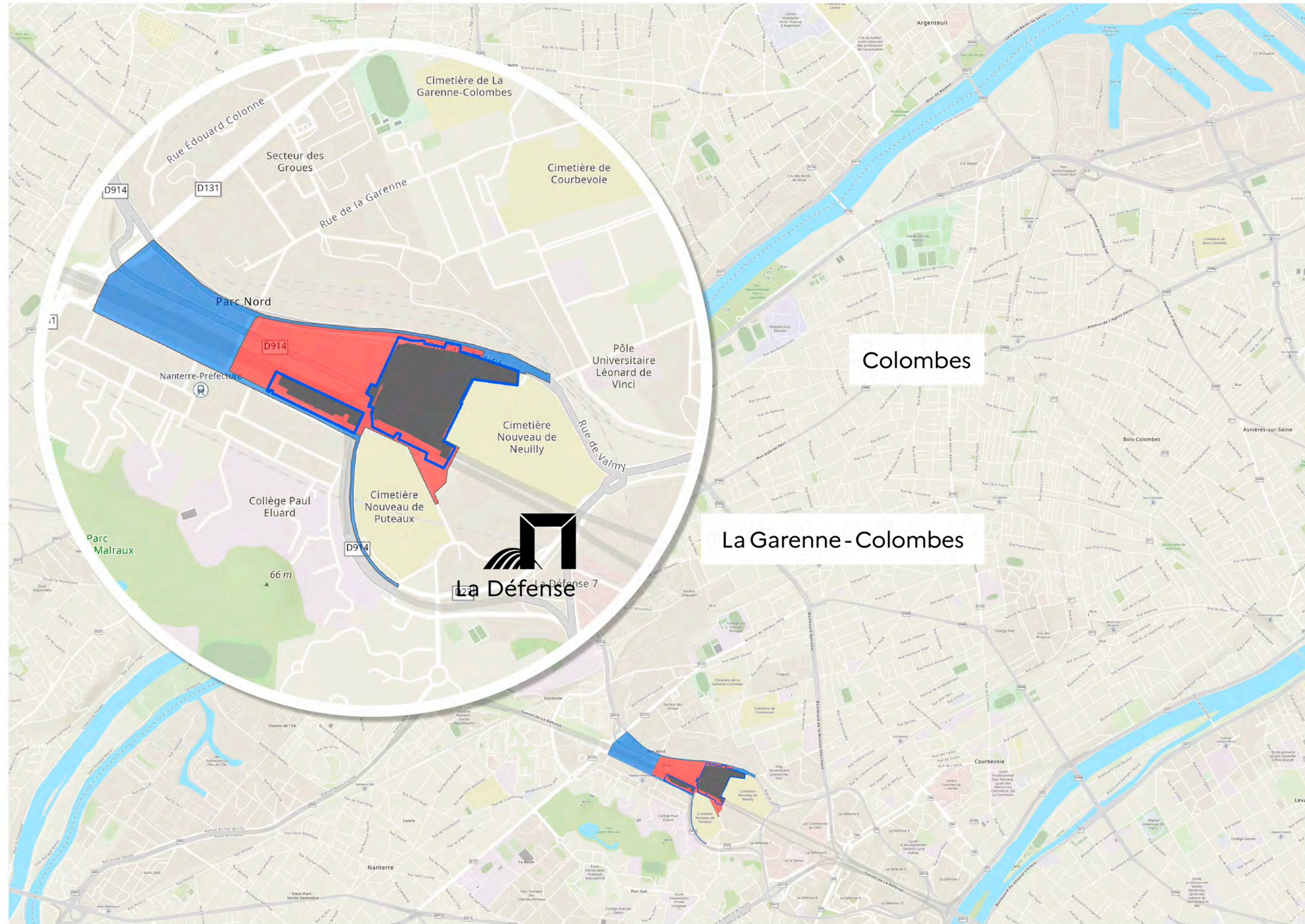


Sites olympiques et paralympiques | Vue Paris | Trocadéro, Tour Eiffel, Champ-de-Mars, Invalides, Grand-Palais, Pont Alexandre III, La Concorde

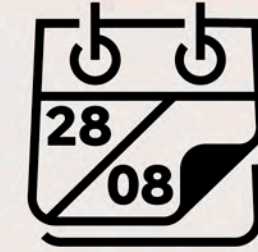












Jeux paralympiques

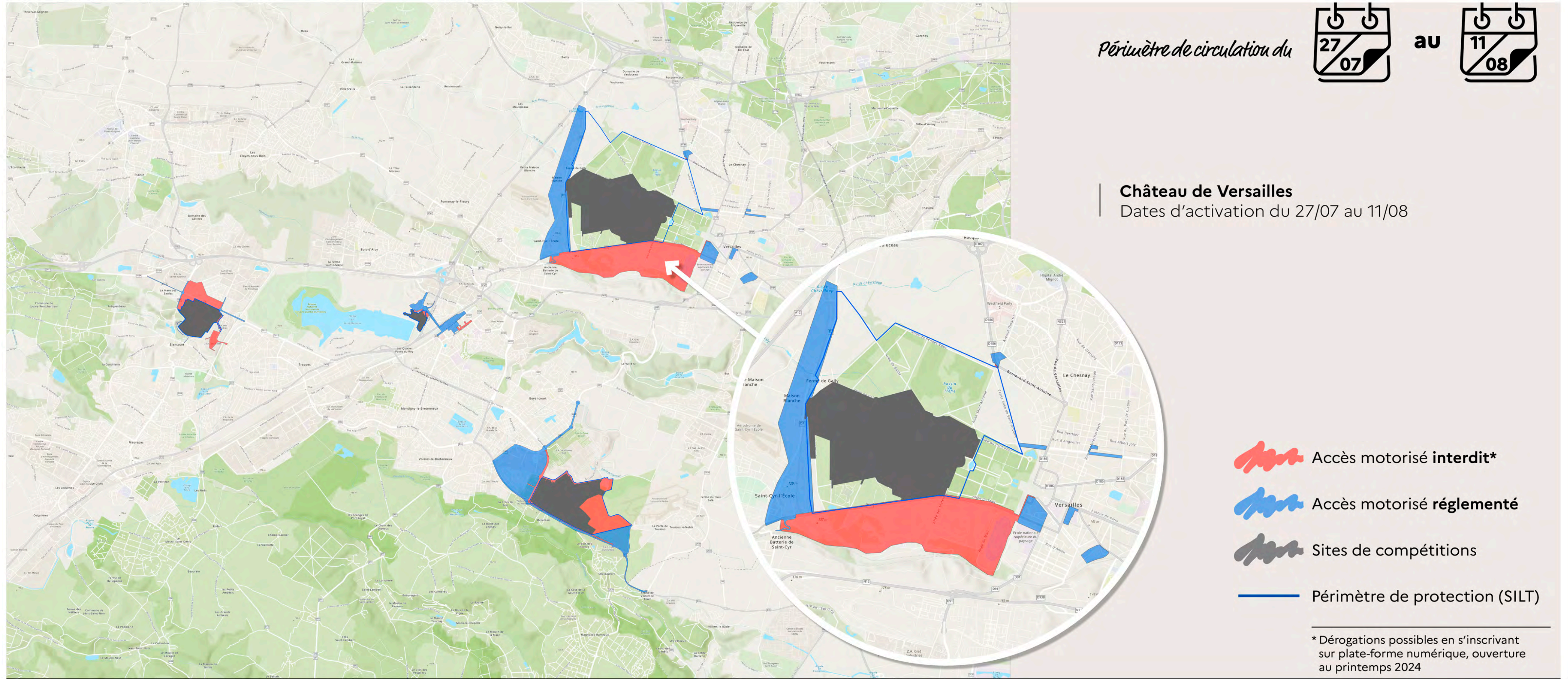


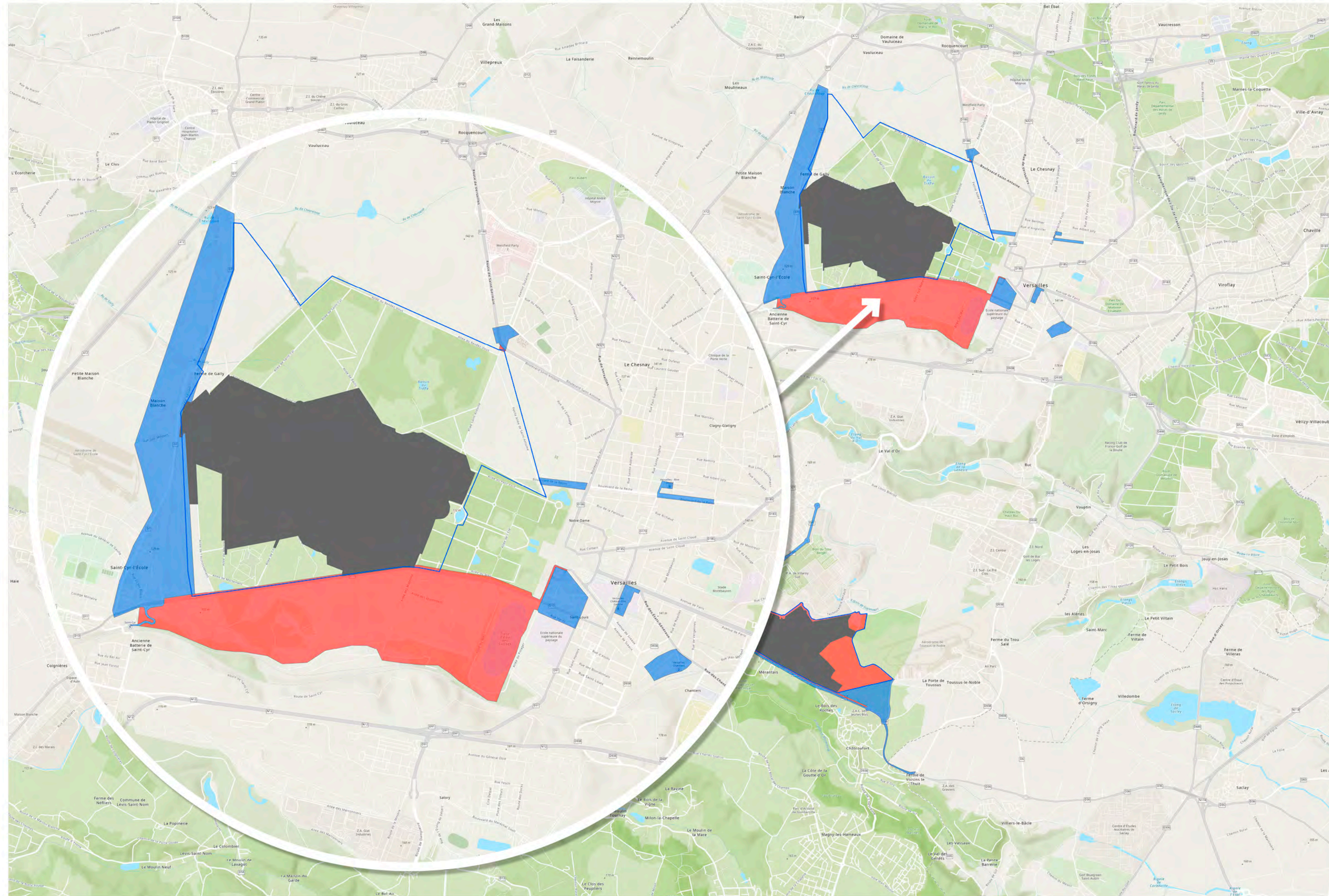
au



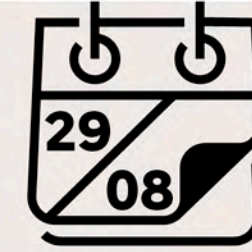
-  Accès motorisé **interdit***
-  Accès motorisé **réglementé**
-  Sites de **compétitions**
-  **Périmètre de protection (SILT)**

* Dérogations possibles en s'inscrivant sur plate-forme numérique, ouverture au printemps 2024








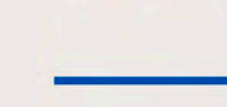
Périumètre de circulation du



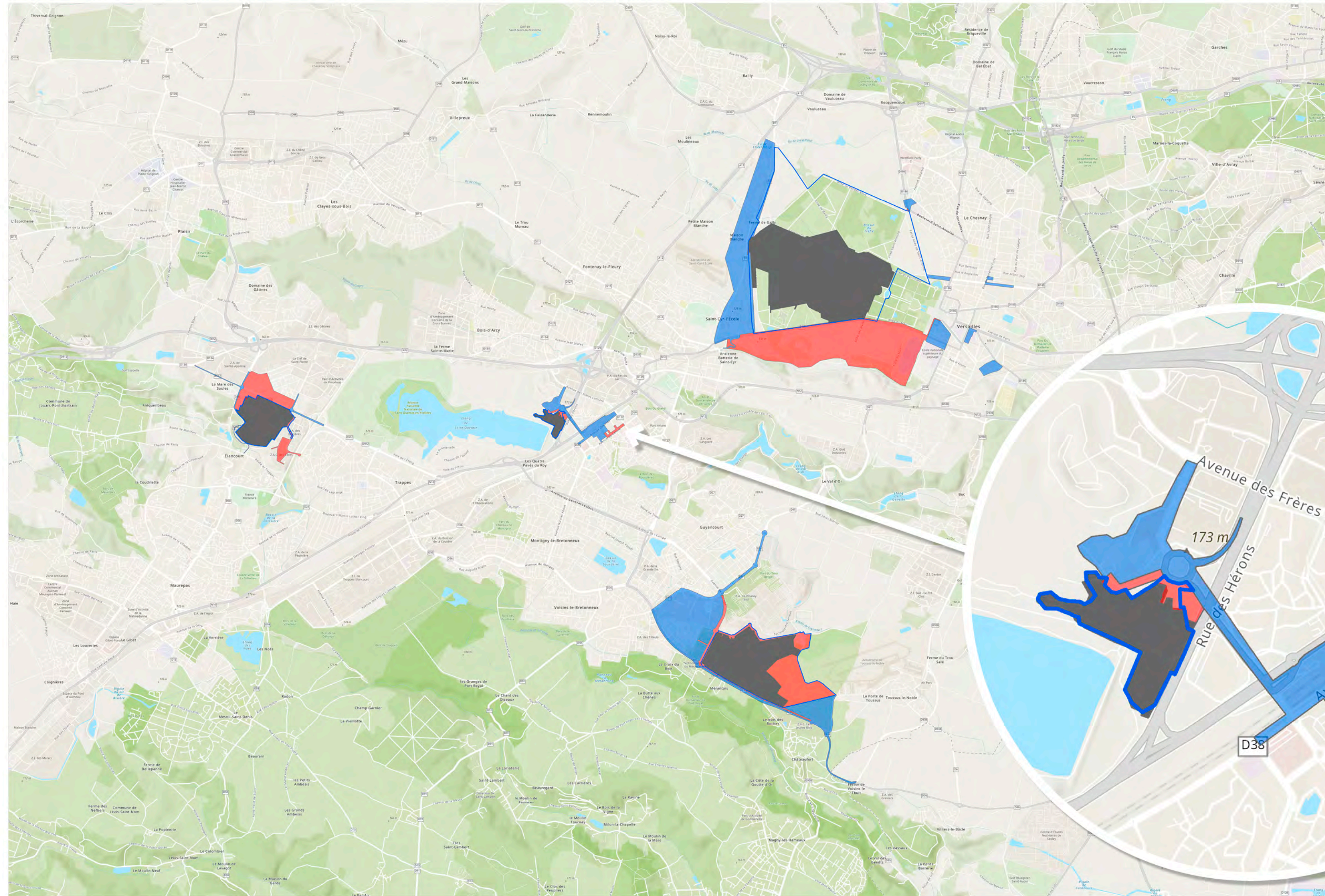
au



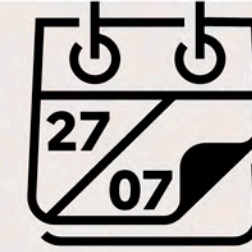
Château de Versailles
Dates d'activation du 03/09 au 07/09

-  Accès motorisé **interdit***
-  Accès motorisé **réglementé**
-  Sites de **compétitions**
-  Périumètre de protection (SILT)

* Dérrogations possibles en s'inscrivant sur plate-forme numérique, ouverture au printemps 2024



Périmètre de circulation du




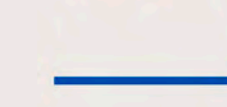


au

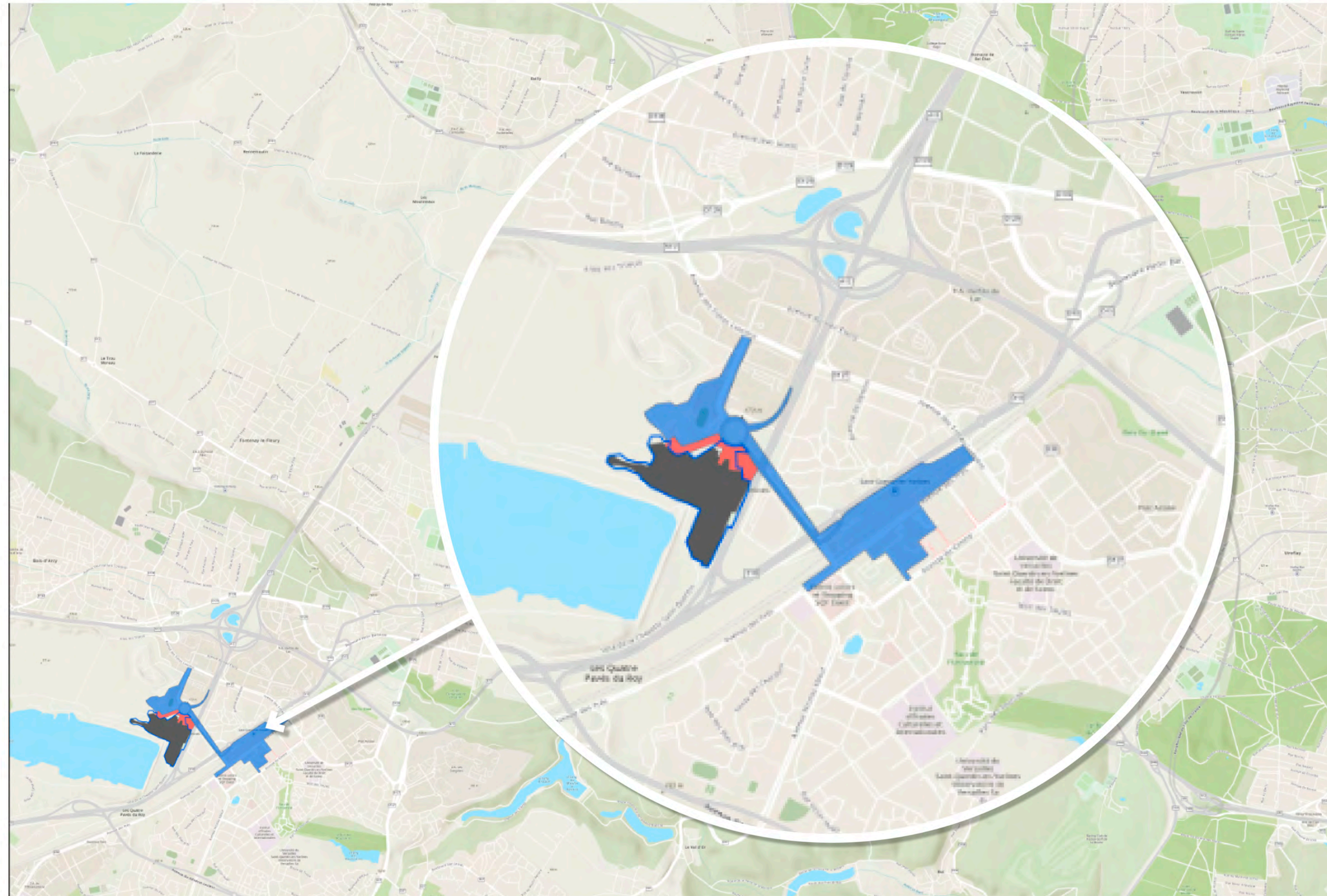




**Vélodrome National
de Saint-Quentin-en-Yvelines**

Dates d'activation en 2 phases :
01/08 au 02/08 puis 05/08 au 11/08





-  Accès motorisé **interdit***
-  Accès motorisé **réglementé**
-  Sites de **compétitions**
-  Périmètre de protection (SILT)

* Dérogations possibles en s'inscrivant sur plate-forme numérique, ouverture au printemps 2024

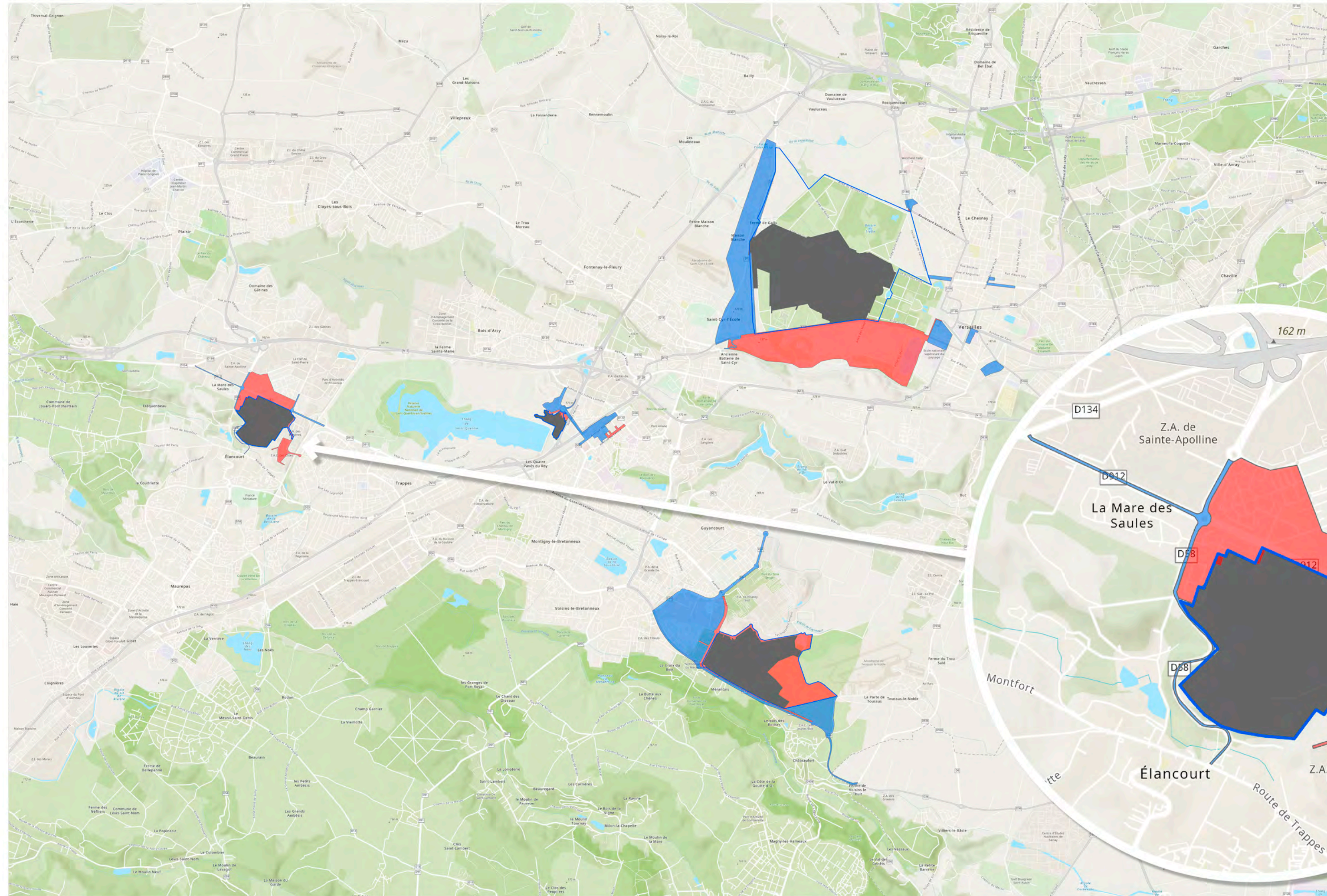


Périmètre de circulation du  au 

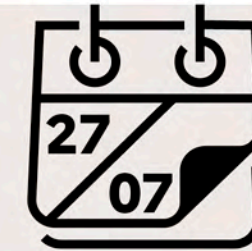
**Vélodrome National
de Saint-Quentin-en-Yvelines**
Dates d'activation du 29/08 au 01/09

-  Accès motorisé **interdit***
-  Accès motorisé **réglementé**
-  Sites de **compétitions**
-  **Périmètre de protection (SILT)**

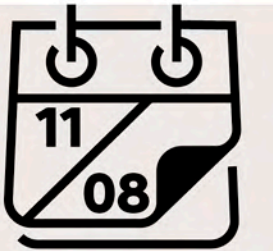
* Dérogations possibles en s'inscrivant sur plate-forme numérique, ouverture au printemps 2024



Périmètre de circulation du




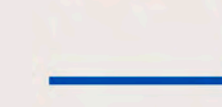


au



Colline d'Élancourt

Dates d'activation du 28/07 au 29/07

-  Accès motorisé **interdit***
-  Accès motorisé **réglementé**
-  Sites de **compétitions**
-  Périimètre de protection (SILT)

* Dérogations possibles en s'inscrivant sur plate-forme numérique, ouverture au printemps 2024

